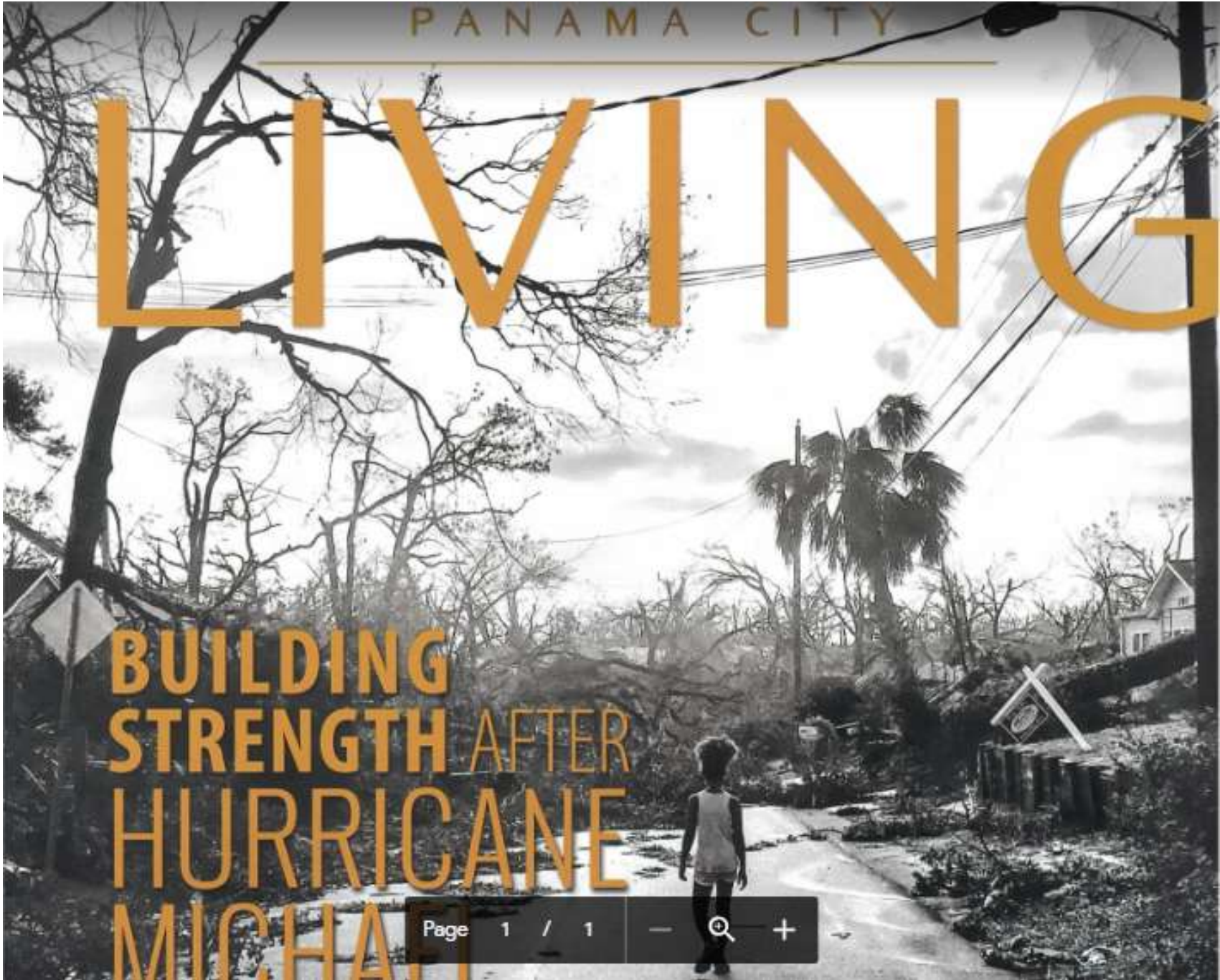


PANAMA CITY

LIVING

BUILDING
STRENGTH AFTER
HURRICANE
MICHAEL



Today's Agenda

- **Introduction of where we are today**
- **Academic updates – Asst. Supt. Denise Kelley**
- **Facilities updates – Facilities Director Lee Walters**
- **Financial challenges – CFO Jim Loyed**
- **Recommendations and Timeframe**
- **Closing**

Bay District Schools By The Numbers

- ***Student decreases:***

- High school -560 (9%)
- Middle School -672 (14.5%)
- Elementary -1799 (17%)
- Special schools -100 (9.5%)
- Charters -368 (7.5%)
- PreK -113 (14%)
- Bay Virtual -9% enrollment
- Home School +231 students after the storm

- **All BDS (excluding charters) from 21,981, to 18,832**

- **Decrease 3,149 (14%)**

Bay District Schools By The Numbers

- **Elementary schools are down 25% excluding beach schools and charters**
- **16 Elementary schools on East side of Hathaway Bridge**
 - **7 of them less than 400 students enrolled**
 - **5 of them at less than 60% capacity**

Bay District Schools By The Numbers

- ***Lost 181 employees***
 - ***72 teachers***
 - ***102 support***
 - ***7 administrators***
 - ***Lost approximately 100 substitutes***

Homeless kids lose their island of stability during the Los Angeles teachers' strike

Chris Woodyard, USA TODAY Published 6:00 a.m. ET Jan. 19, 2019 | Updated 12:11 p.m. ET Jan. 20, 2019

LOS ANGELES – Skid Row is a tough place to raise kids.

Hundreds of this city's most desperately poor wander filthy streets at all hours. Tents spread across sidewalks sometimes for entire blocks, forcing people to thread their way along the gutters of busy streets. Trash piles up everywhere, and alleys reek of urine.

Aware of the dangers, Sarah Hawkins kept a tight grip on daughter Amira, 7, and son Braden, 2, as she emerged onto San Pedro Street from the locked door of the refuge where the family lives, the Union Rescue Mission. A few feet away, a hulking shirtless man assaulted another only minutes before, for apparently just having locked eyes with him.

Normally, Amira would be attending elementary school on this rain-drenched day. But the [strike by teachers in the Los Angeles Unified School District \(/story/news/education/2019/01/14/lausd-utla-teacher-strike-school-today-tomorrow-union-update/2567964002/\)](#) has changed those plans for her and countless homeless kids.

For Hawkins, keeping Amira out of school was a question of safety. "They don't have teaching today," said Hawkins, 27. With the schools [operating with temporary staff \(/story/news/politics/elections/2018/11/02/vote-teacher-education-ballot-election/1849995002/\)](#), she fears they "don't have time to background-check."

Bay District Schools By The Numbers

- **Homeless**
 - Before storm 738, after the storm **4,720! (Storm caused 4,219)**
- **ELL**
 - Before storm 880, after the storm 766
 - But, 143 new!!!
- **Since October 1, 2018 (181 employee decrease)**
 - -72 Teachers
 - -102 Support
 - -7 Administrators
- **Daycare**
 - 126 served (currently 111) with 8 sites

Unlike any other, requires extreme response and planning ...

*State officials have estimated the Oct. 10 hurricane created about **20 million cubic tons of debris**, as the Category 4 storm barreled a path from Mexico Beach into Georgia. Much of the debris is still strewn across the region.*

*By comparison, Hurricane Irma, which cut a path from the Florida Keys to Jacksonville, resulted in about **2 million cubic tons of debris**.*

Local governments expect to eventually receive 75 percent reimbursement from the federal government for debris removal. DeSantis said his request is to bump that figure to 90 percent on the federal side.

“I’m just constantly surprised at the scale of the debris,” DeSantis said. “For a storm that hit a relatively small portion of our state to have 10 times the debris of a storm (Irma) — that, granted, wasn’t as powerful but really ran up the whole state — that is a huge, huge undertaking.”

LOCAL & STATE

Rising claims push losses over \$4.8 billion

By Patrick McCreless
pmccreless@pcnh.com
@PCNHPatrickM

PANAMA CITY — Bay County's Hurricane Michael insurance claims have risen in recent weeks, helping push total losses to more than \$4.8 billion in Florida, according to the latest state Office of Insurance Regulation report.

The report states that as of Jan. 4, the county still had by far the most Michael-related claims with a total of 81,736 claims, up from 79,178 last month. The increase pushed the state's total estimated losses to about \$4.88 billion, up from \$4.3 billion last month.

The losses stem from a total of 136,873 Michael-related claims made since Oct. 12, the report states. The Category 4 hurricane struck on Oct. 10,

causing massive damage in the Panhandle, particularly in areas like Panama City and Mexico Beach.

Of the county's claims, 46,747 were closed and paid as of Jan. 4, the report states. Meanwhile, 71.1 percent of claims statewide have been closed.

Bay County has led in the highest number of claims since reporting began. Jackson County has the next highest amount with 13,362 claims, the report states. Other counties with a significant number of claims include Leon County with 9,319 claims; Gulf County with 7,801 claims; Gadsden County with 5,676 claims; Calhoun County with 3,900 claims; Franklin County with 2,220 claims, Wakulla County with 1,313 claims and Liberty County with 1,106 claims.



Homes damaged by Hurricane Michael, with blue temporary roofs, are seen on Nov. 15. [JOSHUA BOUCHER/ THE NEWS HERALD]

It is all about HOUSING!

Usually communities are 25 – 75

Bay County is 75 - 25

Housing:

- **Multi-Family Apartments (excluding the beach)**
 - **Total Units 6,524 (73% Damaged)**
 - **Callaway 95%**
 - **Cedar Grove 60%**
 - **Lynn Haven 67%**
 - **Panama City 72%**
 - **Parker 71%**
 - **Springfield 72%**

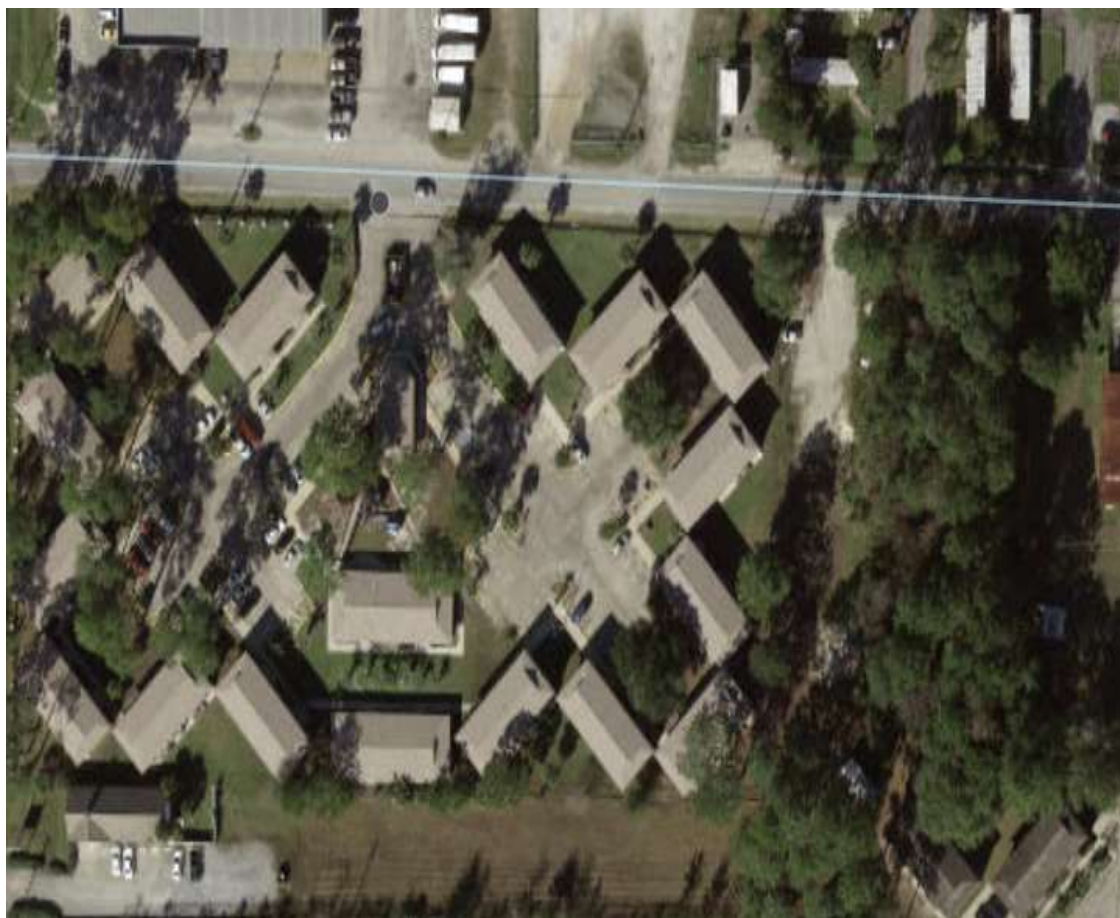
BOB SIKES DR. APARTMENTS



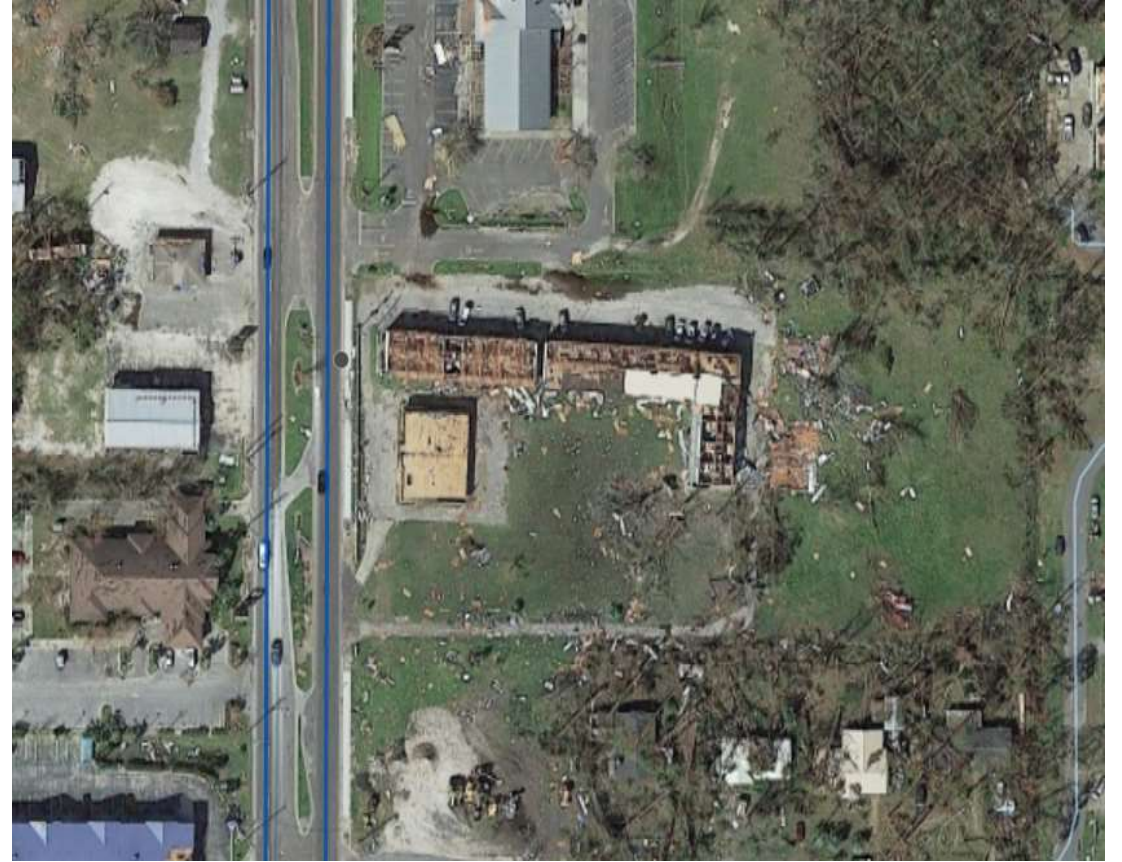
N. FOX APARTMENTS



201 E. 25TH STREET APARTMENTS



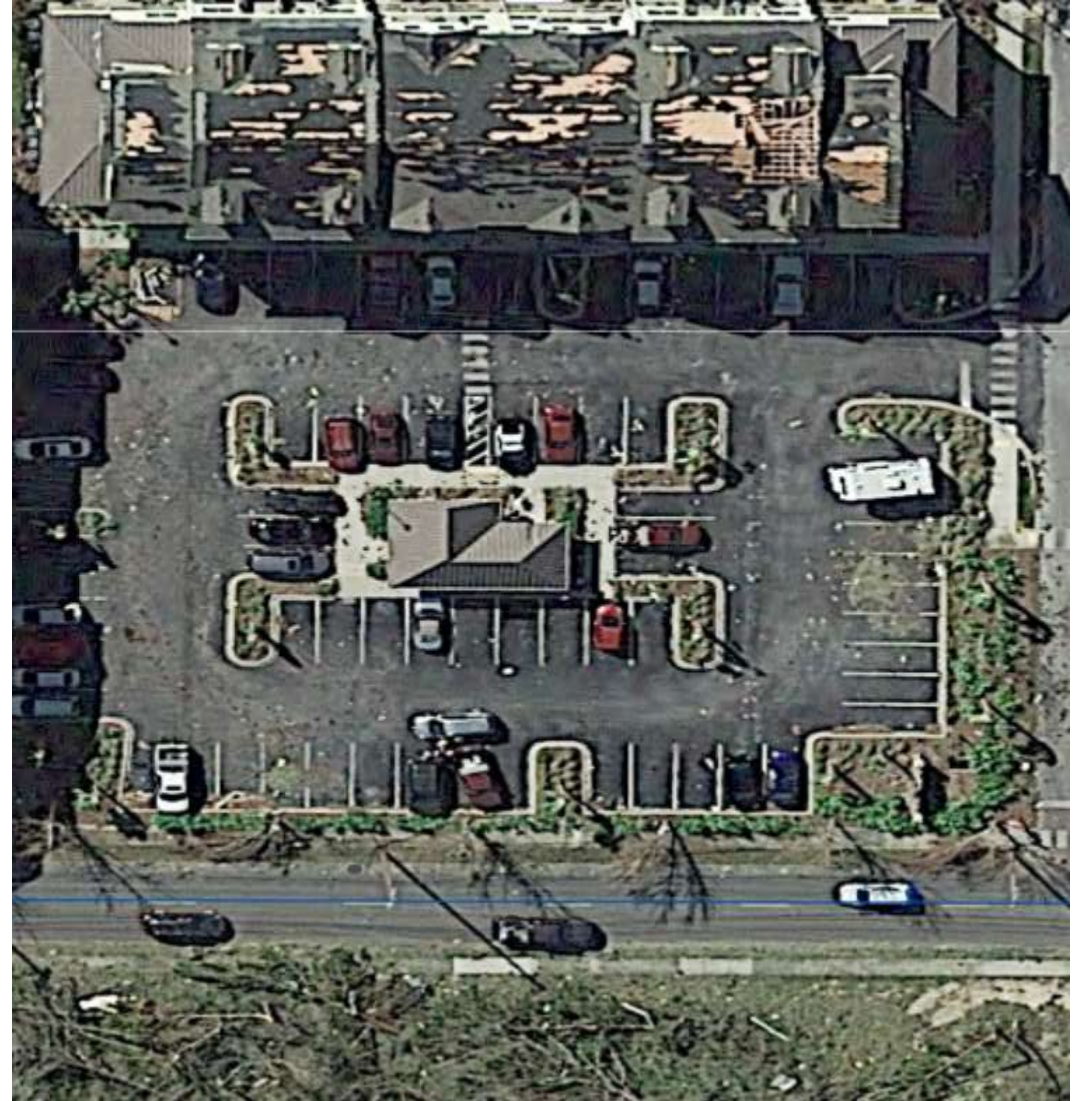
518 N. TYNDALL PARKWAY APARTMENTS



804 E. 15 ST. APARTMENTS



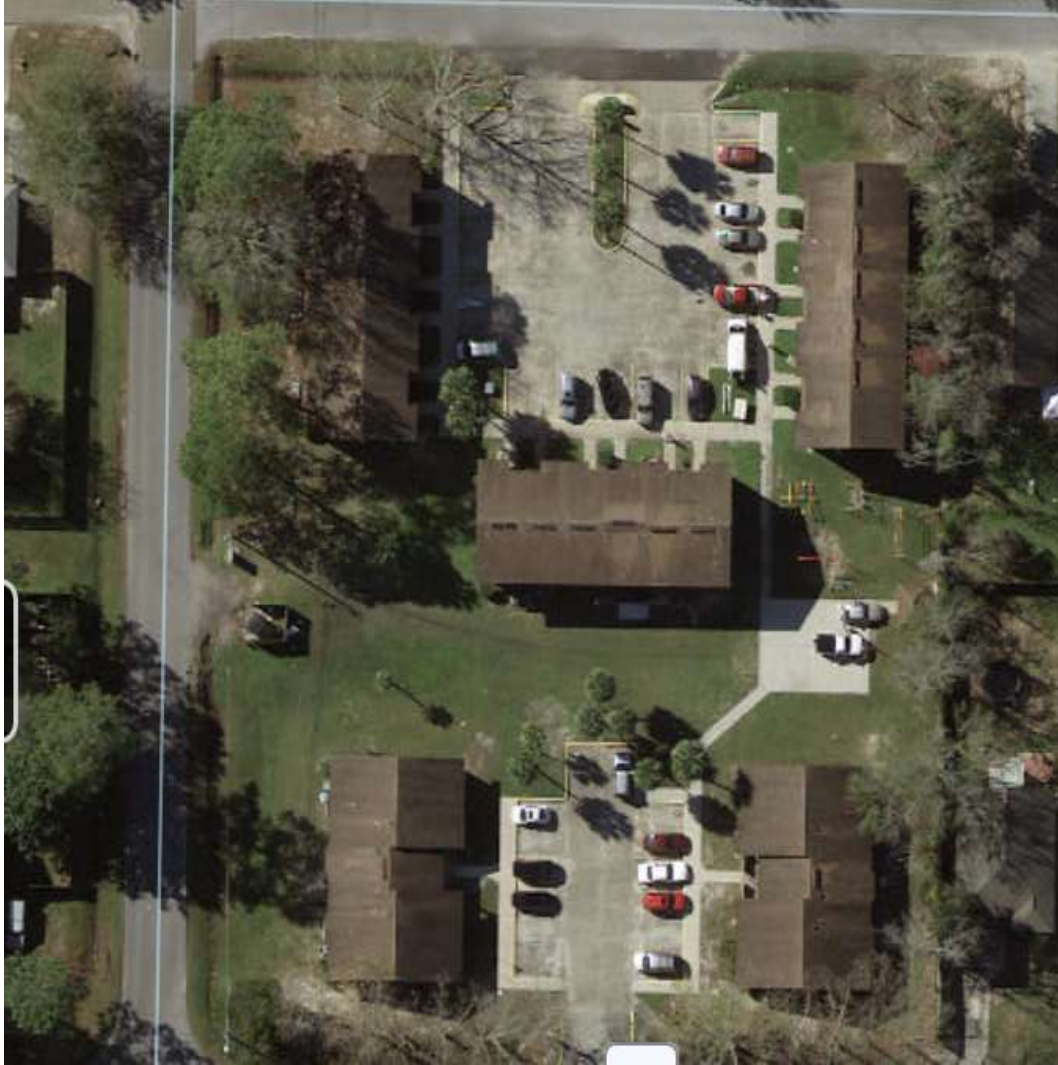
101 SHERMAN AVE. APARTMENTS



1402 BALBOA AVE. APARTMENTS



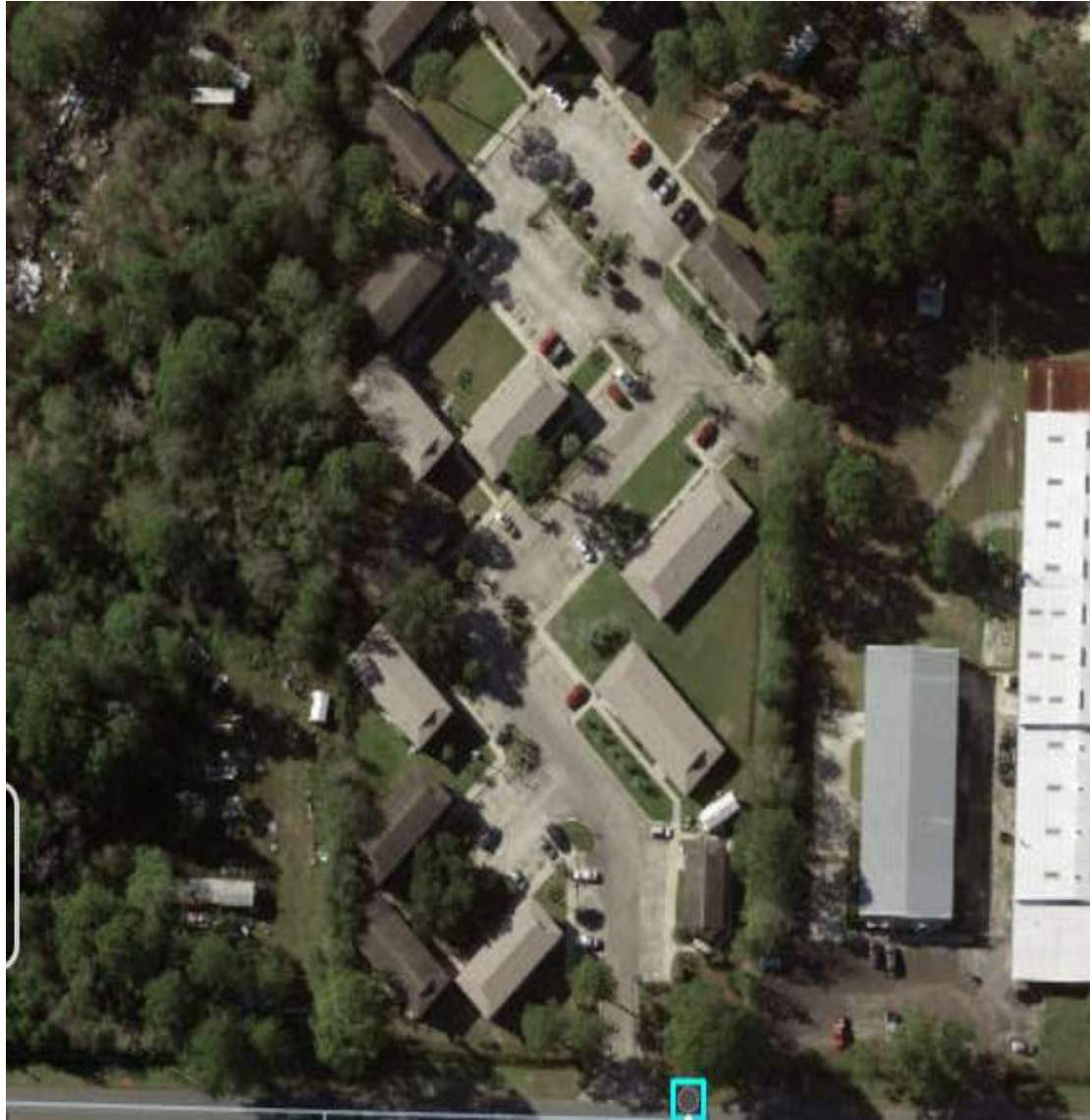
1516 MAINE AVE. APARTMENTS



1722 17TH ST. APARTMENTS



2508 MINNESOTA APARTMENTS



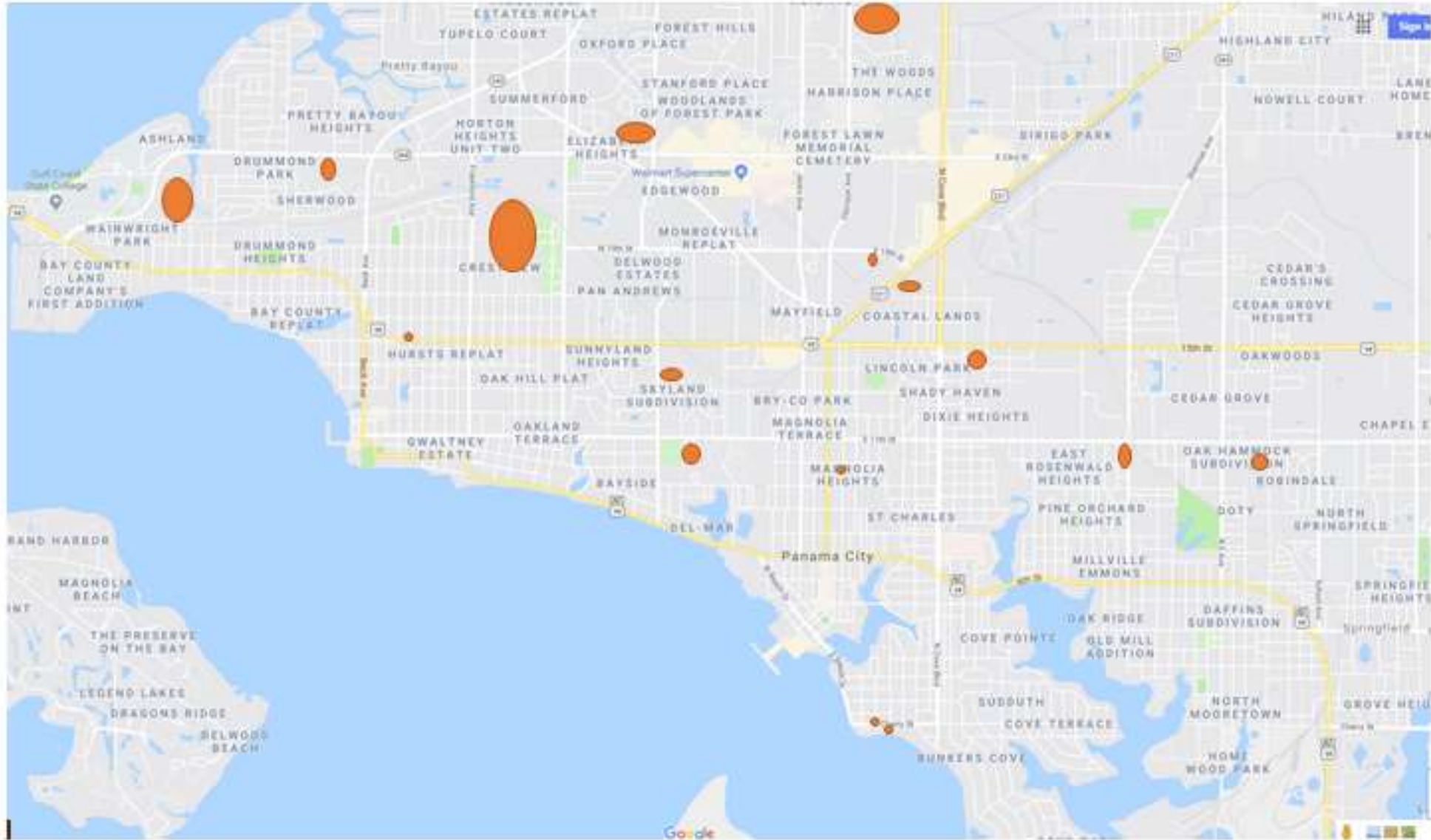
3913 PISA DR. APARTMENTS



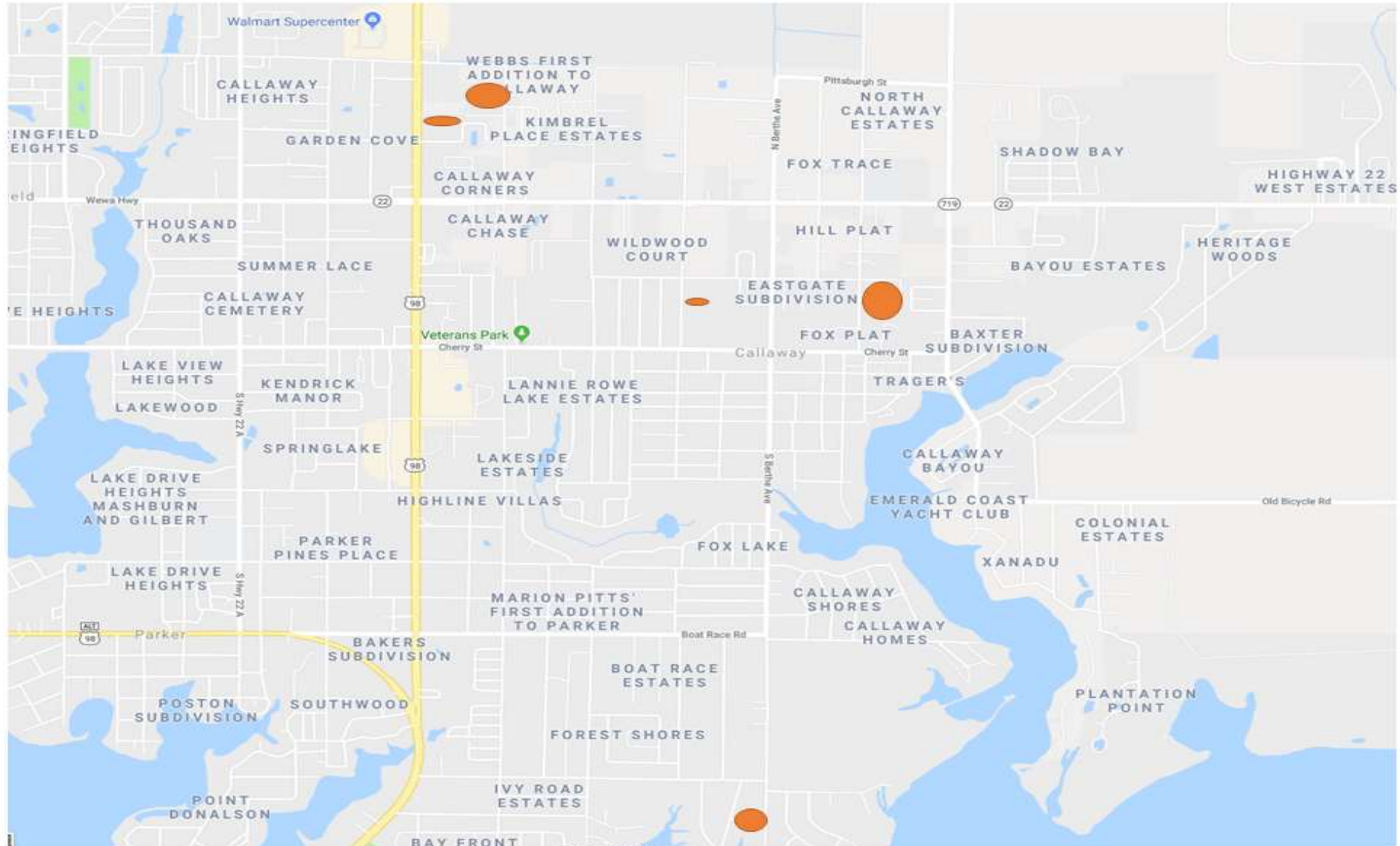
EAGLES LANDING APARTMENTS



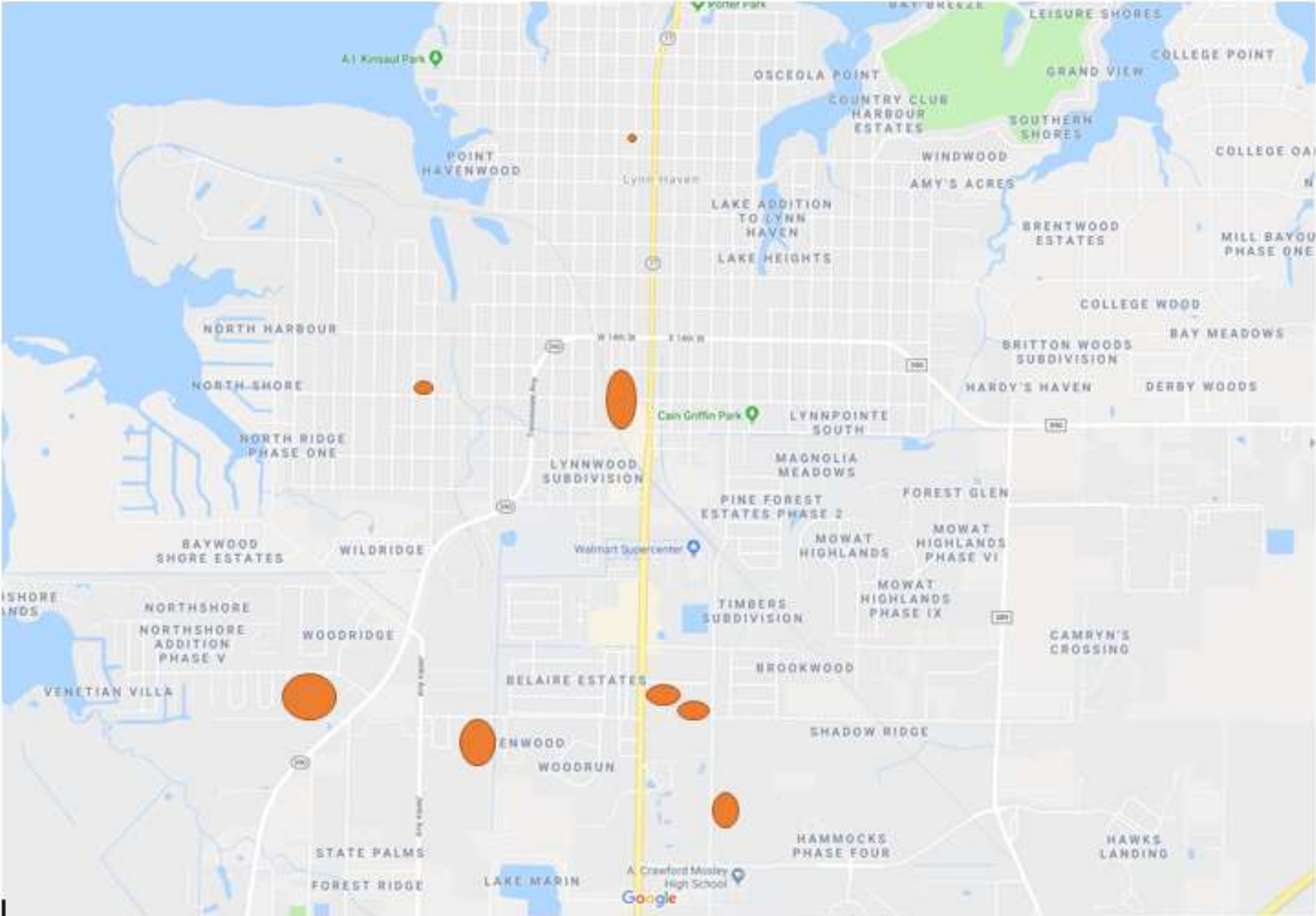
Various Bay County Apartments



Callaway Apartments



LYNN HAVEN APARTMENTS







Where we go from here?

*Recommendations for 2019-20**

- **Restructure Rutherford High School to become 6-12 high school**
- **'Mothball' Oakland Terrace Elementary (rezone to other area schools)**
- **'Mothball' Callaway Elementary (rezone to other area schools)**
- **'Mothball' Oscar Patterson Elementary (rezone to other area schools)**
- **These recommendations will be for 2019-20 and extended until student population returns***

Summation of Rezoning Recommendations

- Callaway students will be re-zoned to Tommy Smith, Parker, Tyndall
- Oakland Terrace students will be re-zoned to Lucille Moore, Northside
- Oscar Patterson students will be re-zoned to Hiland Park, Cherry Street, Cedar Grove
- Springfield students will be re-zoned to Cedar Grove, Parker

Zoning changes will need to be
made and our goal is to
maximize our seating capacity

Long-term Recommendations

- *Rebuild and restructure Everitt Middle School and Springfield Elementary as a K-8*
- *Restructure and reconstruct Tyndall Elementary as a K-8*
- *Restructure and reconstruct Jinks Middle School as a K-8*

Why these recommendations?

- **Financial stability**
 - **Efficiency and maximizing school capacities**
 - **Maintain employee jobs and positions**
- **‘Mothballing’ schools maintains their readiness to be re-opened as needed**

*This will not be easy, but we
haven't faced easy lately – but,
as a community we will be
stronger for our wise decisions
now*

CHOOSE THE HARDER RIGHT
INSTEAD OF THE EASIER WRONG



Staff Reductions with NO help:

- We have been working with Senator Gainer, Rep. Trumbull, Congressmen Dunn, and officials in Tallahassee for months
- Loss of students would be major reductions in staff, if legislators and governor do not help
- 3,500 students (13%) would equal 446 jobs (233 teachers)
- 4,000 students (15%) would equal 510 jobs (267 teachers)
- 5,000 students (18%) would equal 637 jobs (333 teachers)

Timeframe:

- Feb. 5 Special Board Mtg approve for advertising recommendations
- Feb. 18 Kindergarten Registration
- March 12 Board Meeting
- April 1 – 22 Open Enrollment Begins (School Choice)*
- April 22 (week of) Projected Unit Allocations Released
- April 26 Teacher Contract Renewal*
- May 17 School Choice Complete – notifications go live online
- June 3 School Choice Hardship and Out-of-County Begin

Other items to share

- *Mental Health update*
- *Free lunches for the remainder of the year ... (non-charter)*

*Recommendations will be officially
made at a Special Board Meeting on
Tuesday, February 5 @ 6:00 p.m.*

PANAMA CITY

LIVING

BUILDING
STRENGTH AFTER
HURRICANE
MICHAEL

